

Dermablade®

STATE-OF-THE-ART
ERBIUM LASER FOR
AESTHETIC MEDICINE



APPLICATIONS

- + Skin ablation
- + Skin rejuvenation
- + Intravaginal treatments
- + Snoring treatment
- + Scar treatment
- + Cutting

THIS BROCHURE IS NOT INTENDED FOR U.S. MARKET


Asclepion
Laser Technologies



EFFECTIVE
POWERFUL
FLEXIBLE



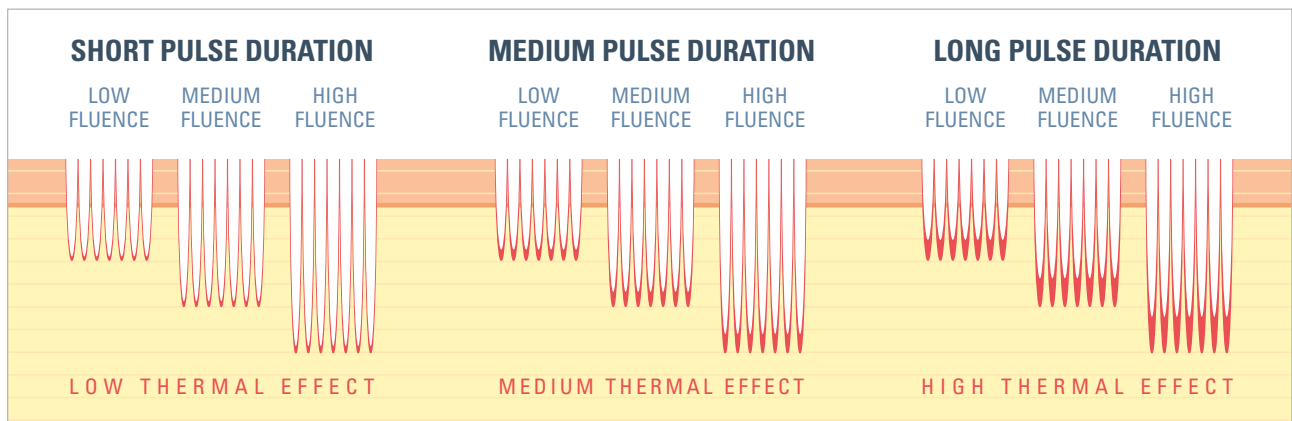
STATE OF THE ART ER:YAG LASER

The new Dermablate® is the latest and highest-performing Er:YAG laser for high-precision skin ablation and fractional therapy. The new ultramodern system enables treatment of a wide variety of benign skin changes, folds and scars as well as many further applications in the most diverse specialist areas.

The Dermablate® enables ablation of the skin with micrometre precision – for a safe and gentle method of removing skin lesions. Its adjustable pulse length facilitates coagulation while its thermal mode reduces bleeding. Small lesions can be treated without anaesthesia. And even for smoothing deep wrinkles, something the Dermablate® is very good at, a local anaesthetic suffices.

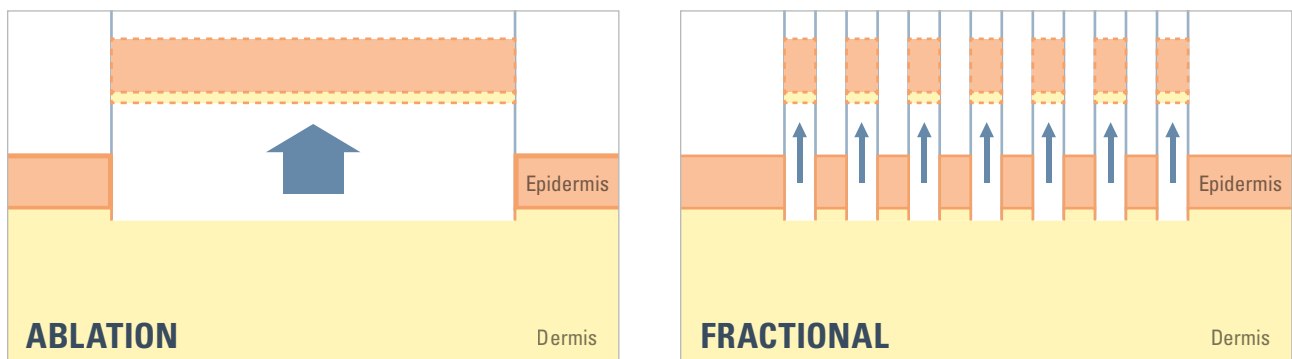
SCAR TREATMENT

Trauma, acne or diseases like chicken pox often leave permanent, unsightly scars. The Dermablate® treatment takes only a few minutes and will restore the skin's smoothness and the patient's sense of well-being.



SKIN REJUVENATION

The Dermablate® offers two options to combat wrinkles and skin imperfections, especially in the facial area: full skin resurfacing as well as fractional therapy. As the MicroSpot handpiece for fractional therapy treats only partial areas of the skin surface, anaesthesia is not necessary. Patients can thus return to their usual everyday activities after just a few days.



SURGICAL APPLICATIONS

A variety of treatments, such as cutting soft tissue in various specialties, can be carried out using the modern CUT handpiece. That makes the Dermablate® the most flexible workstation in laser medicine.

CLINICAL HISTORY

REFERENCES

The Er:YAG laser has been writing a singular success story in medicine and aesthetics since the 1990s:

Asclepion's Er:YAG laser system has been inspiring dermatologists for more than 20 years now. The first laser ever used in dermatology is still suitable for a wide range of treatments, from skin ablation to nail treatment. Asclepion has continuously improved the Erbium laser since 1995, equipping it with innovative handpieces and making it the gold standard it is still considered in dermatology today.

»I consider the Erbium laser from Asclepion a basic investment that no dermatological practice should be without: versatile, extremely powerful, effective, and yet with very few side effects. The new Dermablade® thus offers everything modern medical aesthetic laser therapy requires to treat skin changes, scars and wrinkles.« PROF. DR. PETER A. GERBER, DÜSSELDORF, GERMANY

Asclepion's Er:YAG laser was equipped with the innovative Juliet handpiece in 2014, marking its first use for new gynaecology indications, including mild stress incontinence, vulvovaginal atrophy, menopausal urogenital syndrome, and more.

»Vaginal application in gynecology can be used to treat atrophy symptoms and mild incontinence. It is a non-hormonal, non-surgical, minimally invasive, thus painless and less time-consuming alternative or supplement to previous standard procedures in pelvic floor medicine. The Dermablade® with the Juliet handpiece has the potential to emerge as a new concept for gynecologists to improve the quality of their patient's life.«

DR. MED. HABIL. ANKE MOTHES, CHIEF PHYSICIAN OF THE ST. GEORG WOMEN'S HOSPITAL IN EISENACH, GERMANY

ASCLEPION has offered the ROMEO® handpiece for the Er:YAG laser since 2017. This additional equipment can for the first time be used to successfully treat snoring-related complaints.

»I often use the Dermablade® with the special ROMEO handpiece to treat snoring. It's a great supplement for treating my patients with snoring problems: a really simple and elegant solution that delivers reproducible results and does not require any time off work. It's definitely my favourite laser ever, so versatile and really easy to use. Absolutely recommended!« DR. JOSIP LOVRIC, CROATIA

The versatility of the Erbium laser was extended once again in 2018: the special CUT handpiece made it possible to use the Er:YAG laser for cutting in various specialties.

»The CUT handpiece of the Dermablade® cuts cleanly, reliably and quickly and does everything that has to be done day to day in minor surgery.«
DR. GINA DHAENENS, BELGIUM

UNIQUE
HANDPIECE PORT

LONG ARTICULATED
MIRROR ARM

STORAGE SPACE
FOR TOOLS



INTEGRATED
SMOKE EVACUATION

ADJUSTABLE
PULSE LENGTH

MODERN
DESIGN

Dermablade®



The Dermablade® comes in an innovative design and with revolutionary technologies in all areas. From the mains adapter to the cooler, including the electronics, display, handpieces, user guidance, and foot switch, the system has been completely redeveloped from scratch. A 'Made in Germany' innovation.

- + Maximum power combined with flexible pulse duration
- + Maximum speed for all applications
- + Numerous handpieces for a wide range of treatments
- + Plug-and-play system with remote control
- + Quick set-up
- + Wireless foot switch

Max. 3J

ENERGY

100 - 1500 μ s

PULSE DURATION

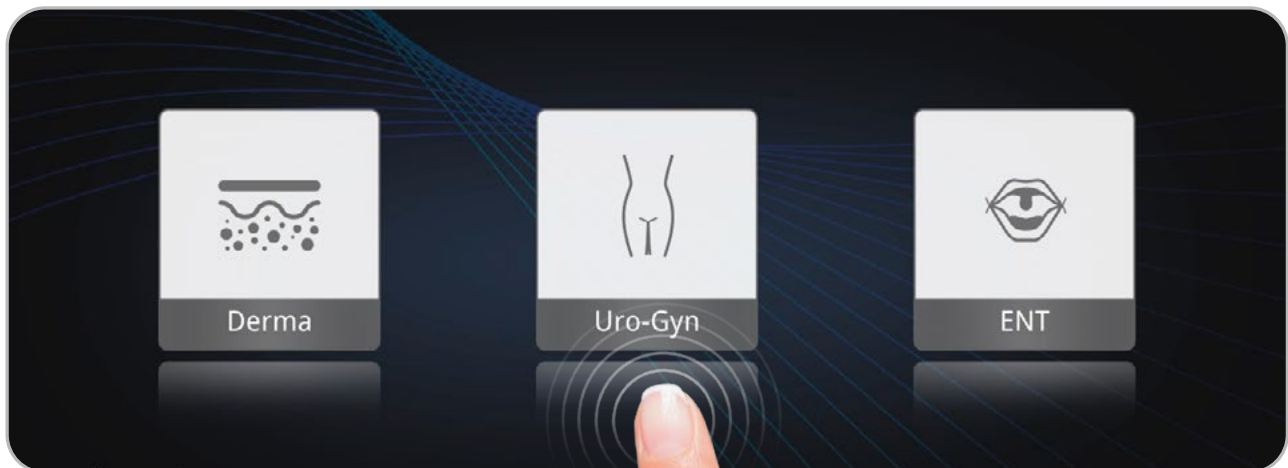
Max. 20 Hz

FREQUENCY

OPERATION

MADE EASY

The 10.1-inch widescreen display allows intuitive operation of the Dermablate®. Users can select between the menu for treatments and settings. Beginners can choose the desired treatment, and the device then gives the recommended settings. Experts can go directly to the working menu and configure the parameters themselves.



- + Modern 10.1" LCD with touchscreen
- + Intuitive menu for beginners and experts
- + Multiple adjustable counters for the best overview
- + Large buttons and symbols for a clear visualisation
- + Dark background for stronger contrast and even more brilliant colours
- + Clear accentuation of active elements with changes in colour and size



THE SPECIALISED HANDPIECES

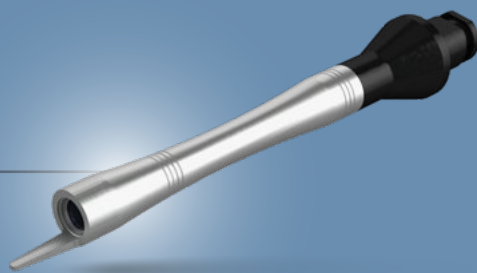
PLUG & PLAY HIGH-TECH

The Dermablate® offers handpieces developed from scratch. Its ergonomic design and low weight offers doctors an uncomplicated instrument for their daily work. Specially developed optics and connections for integrated smoke evacuation make them the perfect tools for every user's day-to-day work.



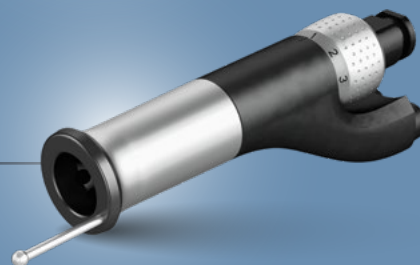
FINELINER

1,5 mm Ø



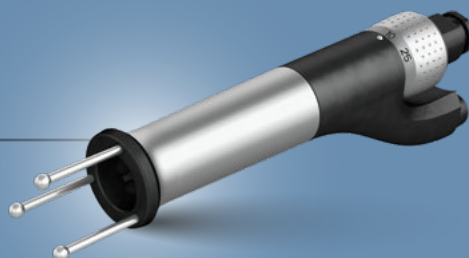
VARIOSPOT

1 mm – 6 mm Ø



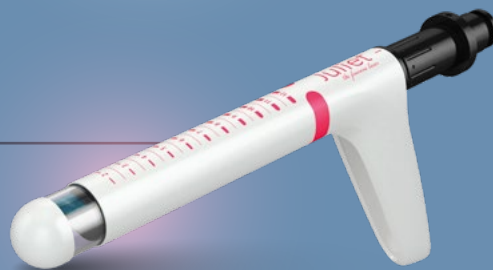
MICROSPOT

13 x 13 mm²



STERI-SPOT

9 x 9 mm²



ROME0

5 x 5 mm²



CUT

0,5 mm Ø



OPTIMAL WORKFLOW

HIGHEST EFFICIENCY CLASS

SMOKE EVACUATOR

The integrated smoke evacuator of the Dermablate® enables the most efficient treatment possible. Extraction in the immediate vicinity of the treatment area considerably simplifies the work process. Setting the smoke evacuation with the help of the rotating bezel above the display also makes handling particularly easy and uncomplicated for the user. The double hose system also ensures both particularly effective and quiet extraction. As hygiene is essential, in developing the integrated smoke extractor Asclepion put special priority on ensuring effective cleaning of the system. The filters are easy and quick to change.

- + Integrated, powerful, adjustable
- + Easy handling
- + Extraction right beside the treatment area
- + Low noise level thanks to activation via foot switch



HANDPIECE PORT

The Dermablate® handpiece port makes the workflow even easier for users. The hoses can be connected directly to the multifunctional handpiece port, and all handpieces are also automatically recognised – ensuring a quick and easy workflow for everyday use in medical practices.

- + Easy changing of handpiece
- + Automatic handpiece detection
- + Connection for the suction hoses
- + Bend connection for handpiece cable
- + Electrical insulation of the handpiece



ASCLEPION

COMPETENCE, EXPERIENCE, SUCCESS

For more than 40 years, Asclepion Laser Technologies has been a leader in international medical laser technology, producing advanced laser systems for dermatology, aesthetic medicine and surgery. The company headquarters are in the Jena Optical Valley, which is world-renowned as the home of the German optical industry. Here the company continually invests in the research and development of new technologies. Today, customers **in more than 70 countries** trust the Made in Germany technology and the scientific expertise of Asclepion.

The new Dermablade[®], successor to the proven MCL31 Dermablade, can look back on a history of unrivalled success achieved around the world. This is a testament to its effectiveness, safety and quality.



Our understanding of top quality also encompasses a customer-driven philosophy. That's why we strive do our best every day, so that we can continue to offer not only the best technology but also the entire spectrum of services: 360° support for you.

TRAINING & EDUCATION



Both regional and international training courses are constantly being held at our training centre in Jena, Germany. These provide our customers with all the knowledge they need to use our laser devices safely and effectively.

For more information, visit:
www.asclepion.com/academy

MARKETING & WEBCLUB



Asclepion's WEBCLUB has a diverse range of marketing tools available. We created our online platform specifically for our customers in order to provide them with direct access to news and important documents for the success of their company.

For more information, visit:
www.asclepion.com/webclub

TECHNICAL SERVICE



Our highly specialised technical support team, which operates both on-site and via a network of local distributors, assists our customers along the entire journey, from installation to support in the event of product defects, to the delivery of replacement parts.

For more information, visit:
www.asclepion.com/service

TECHNICAL SPECIFICATIONS

Laser	Er:YAG, class 4	Spot size	Fineliner	1.5 mm Ø	
Wavelength	2.940 nm		VarioSpot	1 – 6 mm Ø	
Energy	Max. 3 J		MicroSpot	13 x 13 mm ²	
Fluence	Max. 250 J/cm ²		Steri-Spot	9 x 9 mm ²	
Pulse duration	100 µs – 1500 µs		Romeo	5 x 5 mm ²	
Frequency	Max. 20 Hz		CUT	0.5 mm Ø	
Display	10,1" LCD with touchscreen		Modes	Fineliner	Ablation, THERM
Dimensions	40 x 90 x 95 cm ³ (W x D x H)			VarioSpot	Ablation, THERM
Weight	ca. 115 kg	MicroSpot		Cold, Normal, Expert, Warm, Hot	
		Steri-Spot		Juliet C, Juliet W	
		Romeo		Romeo	
		CUT	Ablation, THERM		

(Technical data subject to changes)

www.aclepion.com

ALWAYS THE LATEST PRODUCT INFORMATIONS
FOLLOW US



MADE IN GERMANY

treatment laser	wavelength	2.94 µm
	pulse energy	≤ 3.5 J
	pulse duration	≤ 1.5 ms
	laser class	4
pilot laser	wavelength	635 nm
	peak power	< 1 mW
	laser class	2
classified	acc. to	EN 60825-1: 2014

